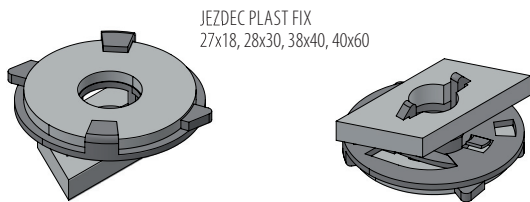
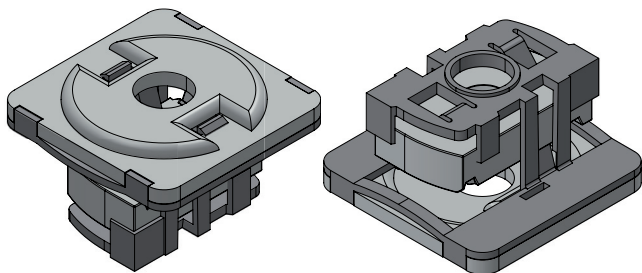


## JEZDEC FIX PRO NOSNÍK, JEZDEC FIX PRO NOSNÍK ST SLIDE NUT FIX FOR FIXING RAIL, SLIDE NUT FIX FOR FIXING RAIL ST

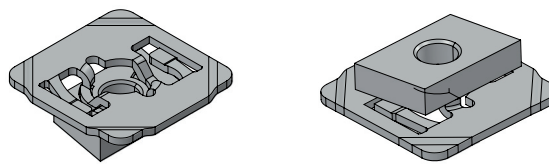


JEZDEC PLAST FIX  
27x18, 28x30, 38x40, 40x60

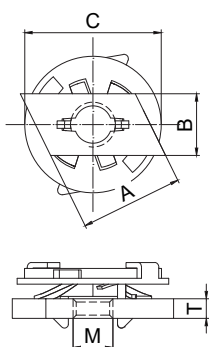
JEZDEC PLAST FIX ST



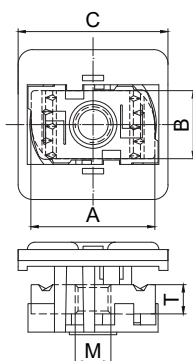
JEZDEC STEEL FIX  
27x18, 28x30, 38x40, 40x60



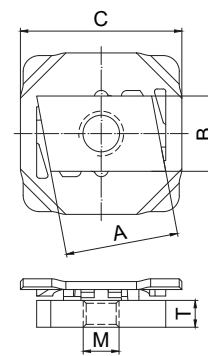
JEZDEC PLAST FIX  
27x18, 28x30, 38x40, 40x60



JEZDEC PLAST FIX ST



JEZDEC STEEL FIX  
27x18, 28x30, 38x40, 40x60



### Technické údaje / Technical data:

Materiál / Material:	ocel třídy 4.6 / steel class 4.6
Povrchová úprava / Surface coating:	galvanicky pozinkováno / zinc plated

Obj. číslo Supply No.	Název Name	A (mm)	B (mm)	C (mm)	M	T (mm)	Vhodné pro profil Suitable for profile	Balení Package (ks/pcs)
32912708	Jezdec PLAST FIX pro nosník / Slide nut type PLAST FIX M8 for fixing rail / M8 27x18+28x30, pozink	24	14	31	M8	4	27x18, 28x30	50
32912710	Jezdec PLAST FIX pro nosník / Slide nut type PLAST FIX M8 for fixing rail / M10 27x18+28x30, pozink	24	14	31	M10	4	27x18, 28x30	50
32913808	Jezdec PLAST FIX pro nosník / Slide nut type PLAST FIX M8 for fixing rail / M8 38x40+40x60, pozink	33	16,5	38	M8	5	38x40, 40x60	50
32913810	Jezdec PLAST FIX pro nosník / Slide nut type PLAST FIX M8 for fixing rail / M10 38x40+40x60, pozink	33	16,5	38	M10	5	38x40, 40x60	50
32913812	Jezdec PLAST FIX pro nosník / Slide nut type PLAST FIX M8 for fixing rail / M12 38x40+40x60, pozink	33	16,5	38	M12	6	38x40, 40x60	50
32914108	Jezdec PLAST FIX ST pro nosník / Slide nut type PLAST FIX ST M8 for fixing rail / M8	33	19	41	M8	6	ST41x21, 41, 62	50
32914110	Jezdec PLAST FIX ST pro nosník / Slide nut type PLAST FIX ST M10 for fixing rail / M10	33	19	41	M10	8	ST41x21, 41, 62	50
32914112	Jezdec PLAST FIX ST pro nosník / Slide nut type PLAST FIX ST M12 for fixing rail / M12	33	19	41	M12	8	ST41x21, 41, 62	50
32922708	Jezdec STEEL FIX pro nosník / Slide nut type STEEL FIX M8 for fixing rail / M8 27x18+28x30, pozink	21	14	30	M8	5	27x18, 28x30	50
32922710	Jezdec STEEL FIX pro nosník / Slide nut type STEEL FIX M8 for fixing rail / M10 27x18+28x30, pozink	21	14	30	M10	5	27x18, 28x30	50
32923808	Jezdec STEEL FIX pro nosník / Slide nut type STEEL FIX M8 for fixing rail / M8 38x40+40x60, pozink	31	16,5	40	M8	6	38x40, 40x60	50
32923810	Jezdec STEEL FIX pro nosník / Slide nut type STEEL FIX M8 for fixing rail / M10 38x40+40x60, pozink	31	16,5	40	M10	8	38x40, 40x60	50
32923812	Jezdec STEEL FIX pro nosník / Slide nut type STEEL FIX M8 for fixing rail / M12 38x40+40x60, pozink	31	16,5	40	M12	8	38x40, 40x60	50

### Montážní postup / Mounting procedure:

