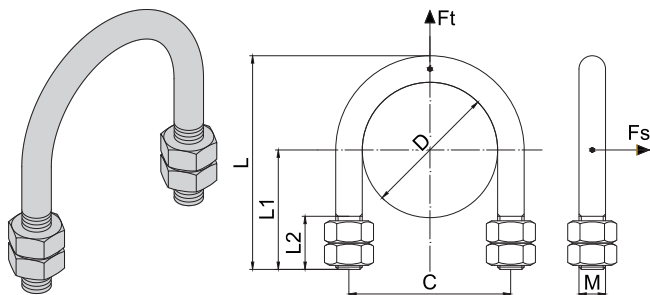


POTRUBNÍ DÍLY, TĚŽKÉ ULOŽENÍ POTRUBÍ

PIPE PARTS, HEAVY PIPES SUPPORTS

ČSN130725.0 TŘMENY Z KRUHOVÉ OCELI

ČSN130725.0 U-BOLTS FROM ROUND STEEL



Popis:

Třmen je svou konstrukcí jednoduchý výrobek pro uchycení potrubí. Lze jej použít jako jednoduchý pevný bod (třmen se 2 maticemi) nebo kluzný bod (třmen se 4 maticemi) pro uchycení potrubí o maximální provozní teplotě do 300°C.

Třmeny dle normy ČSN130725.0 jsou dodávány včetně 4ks matic dle DIN934.

Použití:

- ocelové potrubí
- plastové potrubí
- měděné potrubí

Odvětví:

- voda, topení, plyn
- odpadní potrubí
- konstrukce pevných bodů

Description:

U-bolt is simple product for fixing the pipes. It can be used as a simple fixed point (U-bolt with two nuts) or as sliding point (U-bolt with 4 nuts) for fixing the pipes with a maximum operating temperature up to 300°C.

The U-bolts according ČSN130725.0 are supplied with 4 nuts DIN934.

Use:

- steel pipes
- plastic pipes
- copper pipes

Field:

- water, heating, gas
- waste pipes
- fixing points

Technické údaje / Technical data:

| | |
|-------------------------------------|--------------------------------------|
| Materiál / Material: | Q195 |
| Povrchová úprava / Surface coating: | galvanicky pozinkováno / zinc plated |

| Obj. číslo Supply No. | Název Name | | Průměr potrubí Diameter of pipe DN | D(mm) | C Rozteč/Span (mm) | L (mm) | L1 (mm) | L2 (mm) | M Závit Thread | Hmotnost Weight (kg/pcs) | Nosnost Load capacity Fs (kg) | Nosnost Load capacity Ft (kg) | Balení Package (ks/pcs) |
|--------------------------|---|-------------|--|-------|--------------------------|-----------|------------|------------|----------------------|--------------------------------|-------------------------------------|-------------------------------------|-------------------------------|
| 22400010 | Třmen / U-bolt / DN10 M6 20 mm, ČSN130725.0 pozink | zinc plated | 10 | 20 | 26 | 39,0 | 23 | 15 | M6 | 0,027 | 20 | 100 | 10 |
| 22400015 | Třmen / U-bolt / DN15 M6 25 mm, ČSN130725.0 pozink | zinc plated | 15 | 25 | 31 | 44,5 | 26 | 15 | M6 | 0,030 | 20 | 100 | 10 |
| 22400020 | Třmen / U-bolt / DN20 M8 30 mm, ČSN130725.0 pozink | zinc plated | 20 | 30 | 38 | 55,0 | 32 | 15 | M8 | 0,065 | 40 | 200 | 10 |
| 22400025 | Třmen / U-bolt / DN25 M8 36 mm, ČSN130725.0 pozink | zinc plated | 25 | 36 | 44 | 60,0 | 34 | 15 | M8 | 0,070 | 40 | 200 | 10 |
| 22400032 | Třmen / U-bolt / DN32 M8 45 mm, ČSN130725.0 pozink | zinc plated | 32 | 45 | 53 | 70,5 | 40 | 20 | M8 | 0,081 | 40 | 200 | 10 |
| 22400040 | Třmen / U-bolt / DN40 M10 51 mm, ČSN130725.0 pozink | zinc plated | 40 | 51 | 61 | 80,5 | 45 | 20 | M10 | 0,158 | 60 | 280 | 10 |
| 22400050 | Třmen / U-bolt / DN50 M10 63 mm, ČSN130725.0 pozink | zinc plated | 50 | 63 | 73 | 91,5 | 50 | 32 | M10 | 0,177 | 60 | 280 | 10 |
| 22400065 | Třmen / U-bolt / DN65 M12 80 mm, ČSN130725.0 pozink | zinc plated | 65 | 80 | 92 | 116,0 | 64 | 40 | M12 | 0,300 | 90 | 400 | 10 |
| 22400080 | Třmen / U-bolt / DN80 M12 94 mm, ČSN130725.0 pozink | zinc plated | 80 | 93 | 105 | 130,5 | 72 | 40 | M12 | 0,350 | 90 | 400 | 10 |
| 22400100 | Třmen / U-bolt / DN100 M16 116 mm, ČSN130725.0 pozink | zinc plated | 100 | 116 | 132 | 164,0 | 90 | 50 | M16 | 0,750 | 150 | 700 | 1 |
| 22400125 | Třmen / U-bolt / DN125 M16 145 mm, ČSN130725.0 pozink | zinc plated | 125 | 145 | 161 | 193,5 | 105 | 55 | M16 | 0,860 | 150 | 700 | 1 |
| 22400150 | Třmen / U-bolt / DN150 M16 170 mm, ČSN130725.0 pozink | zinc plated | 150 | 170 | 186 | 221,0 | 120 | 55 | M16 | 0,960 | 150 | 700 | 1 |
| 22400200 | Třmen / U-bolt / DN200 M20 227 mm, ČSN130725.0 pozink | zinc plated | 200 | 227 | 247 | 283,5 | 150 | 60 | M20 | 1,950 | 250 | 1000 | 1 |
| 22400250 | Třmen / U-bolt / DN250 M20 284 mm, ČSN130725.0 pozink | zinc plated | 250 | 284 | 304 | 342,0 | 180 | 65 | M20 | 2,320 | 250 | 1000 | 1 |
| 22400300 | Třmen / U-bolt / DN300 M20 334 mm, ČSN130725.0 pozink | zinc plated | 300 | 334 | 354 | 392,0 | 205 | 65 | M20 | 2,640 | 250 | 1000 | 1 |
| 22400350 | Třmen / U-bolt / DN350 M20 365 mm, ČSN130725.0 pozink | zinc plated | 350 | 365 | 385 | 422,5 | 220 | 70 | M20 | 2,840 | 250 | 1000 | 1 |

Uvedená nosnost je pouze informativní a je vypočtena pro třmeny z oceli 11 373.0 pro nejvyšší pracovní teplotu 300 °C. / The load capacity is only for information and calculated for the pipe clamps of steel 11 373 for the maximum working temperature of 300 °C.

| | | | | | | | | | | | | | |
|----------|---|-----------|-----|-----|-----|-------|-----|----|-----|-------|---|---|---|
| 22402010 | Třmen / U-bolt / DN10 M6 20 mm, ČSN130725.0 NEREZ A2 | stainless | 10 | 20 | 26 | 39,0 | 23 | 15 | M6 | 0,027 | - | - | 1 |
| 22402015 | Třmen / U-bolt / DN15 M6 25 mm, ČSN130725.0 NEREZ A2 | stainless | 15 | 25 | 31 | 44,5 | 26 | 15 | M6 | 0,030 | - | - | 1 |
| 22402020 | Třmen / U-bolt / DN20 M8 30 mm, ČSN130725.0 NEREZ A2 | stainless | 20 | 30 | 38 | 55,0 | 32 | 15 | M8 | 0,065 | - | - | 1 |
| 22402025 | Třmen / U-bolt / DN25 M8 36 mm, ČSN130725.0 NEREZ A2 | stainless | 25 | 36 | 44 | 60,0 | 34 | 15 | M8 | 0,070 | - | - | 1 |
| 22402032 | Třmen / U-bolt / DN32 M8 45 mm, ČSN130725.0 NEREZ A2 | stainless | 32 | 45 | 53 | 70,5 | 40 | 20 | M8 | 0,081 | - | - | 1 |
| 22402040 | Třmen / U-bolt / DN40 M10 51 mm, ČSN130725.0 NEREZ A2 | stainless | 40 | 51 | 61 | 80,5 | 45 | 20 | M10 | 0,158 | - | - | 1 |
| 22402050 | Třmen / U-bolt / DN50 M10 63 mm, ČSN130725.0 NEREZ A2 | stainless | 50 | 63 | 73 | 91,5 | 50 | 32 | M10 | 0,177 | - | - | 1 |
| 22402065 | Třmen / U-bolt / DN65 M12 80 mm, ČSN130725.0 NEREZ A2 | stainless | 65 | 80 | 92 | 116,0 | 64 | 40 | M12 | 0,300 | - | - | 1 |
| 22402080 | Třmen / U-bolt / DN80 M12 94 mm, ČSN130725.0 NEREZ A2 | stainless | 80 | 93 | 105 | 130,5 | 72 | 40 | M12 | 0,350 | - | - | 1 |
| 22402100 | Třmen / U-bolt / DN100 M16 116 mm, ČSN130725.0 NEREZ A2 | stainless | 100 | 116 | 132 | 164,0 | 90 | 50 | M16 | 0,750 | - | - | 1 |
| 22402125 | Třmen / U-bolt / DN125 M16 145 mm, ČSN130725.0 NEREZ A2 | stainless | 125 | 145 | 161 | 193,5 | 105 | 55 | M16 | 0,860 | - | - | 1 |
| 22402150 | Třmen / U-bolt / DN150 M16 170 mm, ČSN130725.0 NEREZ A2 | stainless | 150 | 170 | 186 | 221,0 | 120 | 55 | M16 | 0,960 | - | - | 1 |
| 22402200 | Třmen / U-bolt / DN200 M20 227 mm, ČSN130725.0 NEREZ A2 | stainless | 200 | 227 | 247 | 283,5 | 150 | 60 | M20 | 1,950 | - | - | 1 |
| 22402250 | Třmen / U-bolt / DN250 M20 284 mm, ČSN130725.0 NEREZ A2 | stainless | 250 | 284 | 304 | 342,0 | 180 | 65 | M20 | 2,320 | - | - | 1 |
| 22402300 | Třmen / U-bolt / DN300 M20 334 mm, ČSN130725.0 NEREZ A2 | stainless | 300 | 334 | 354 | 392,0 | 205 | 65 | M20 | 2,640 | - | - | 1 |
| 22402350 | Třmen / U-bolt / DN350 M20 365 mm, ČSN130725.0 NEREZ A2 | stainless | 350 | 365 | 385 | 422,5 | 220 | 70 | M20 | 2,840 | - | - | 1 |